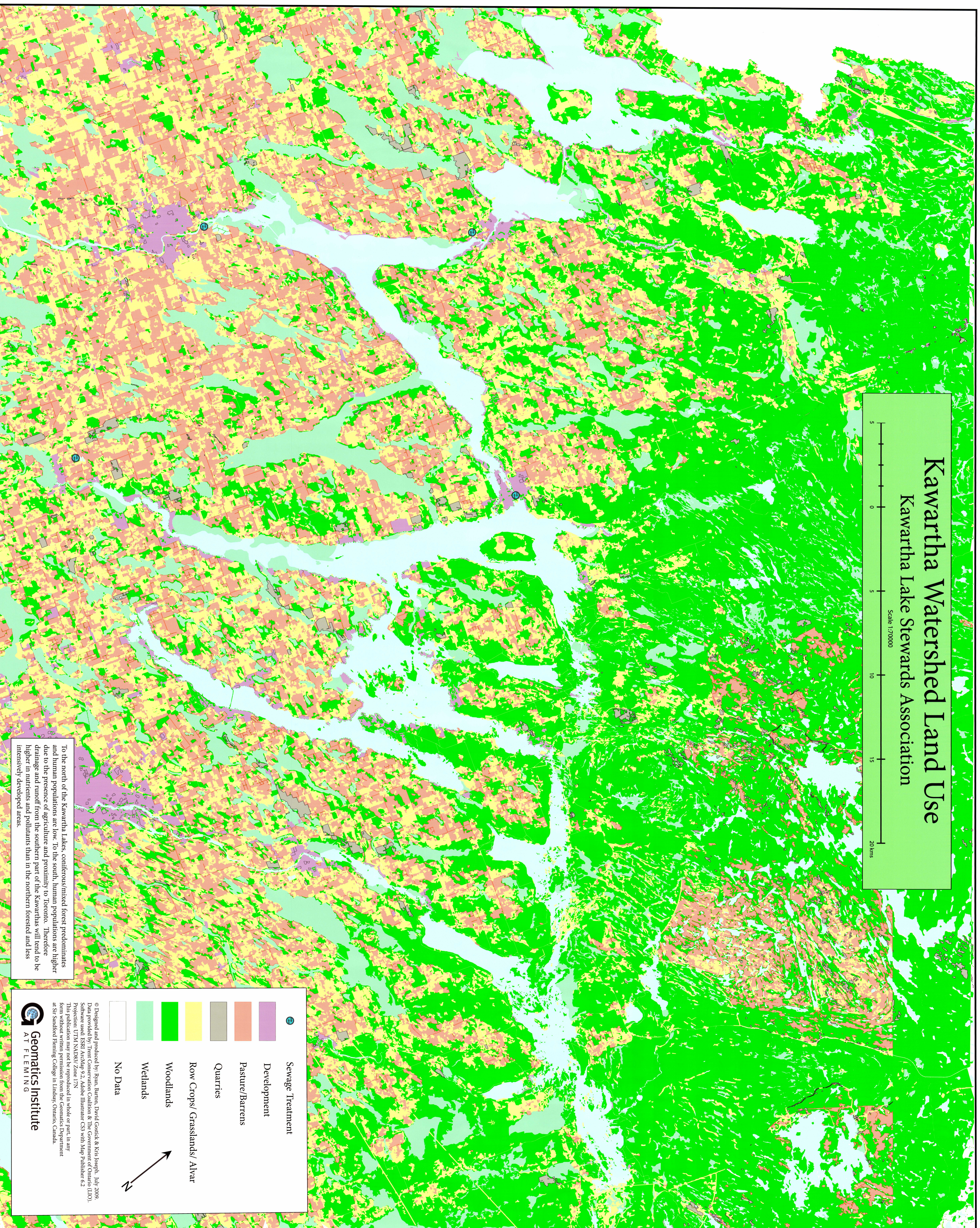
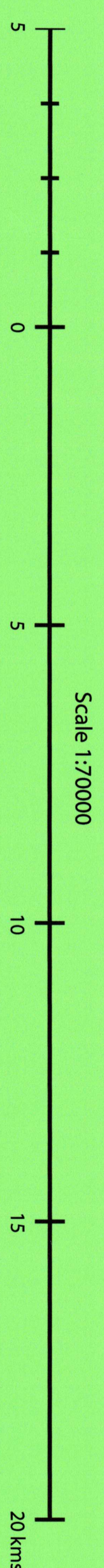



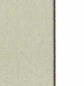






# Kawartha Watershed Land Use

## Kawartha Lake Stewards Association



To the north of the Kawartha Lakes, coniferous/mixed forest predominates and human populations are low. To the south, human populations are higher due to the presence of agriculture and proximity to Toronto. Therefore drainage and runoff from the southern part of the Kawarthas will tend to be higher in nutrients and pollutants than in the northern forested and less intensively developed areas.

-  Sewage Treatment
-  Development
-  Pasture/Barrens
-  Quarries
-  Row Crops/ Grasslands/ Alvar
-  Woodlands
-  Wetlands
-  No Data

© Designed and produced by: Brian, Barton, David Gostick & Kris Joseph, July 2009.  
Data provided by: Trent Conservation Coalition & The Government of Ontario (LTO).  
Software used: ESRI ArcMap 9.2, Adobe Illustrator CS3 with Map Publisher 6.2  
Projection: UTM NAD83/ Zone 17N  
This publication may not be reproduced in whole or part, in any form without written permission from the Geomatics Department at Sir Sandford Fleming College in Lindsay, Ontario, Canada.

