

SPECIAL ALERT

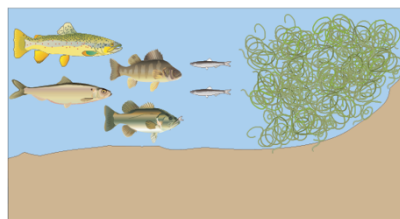
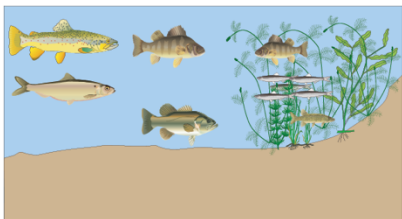
STARRY STONEWORT IN STON(E)Y LAKE

Starry Stonewort is an extremely aggressive, fast-spreading macro alga. It has been spreading throughout the Trent-Severn Waterway for several years and is now in Ston(e)y Lake. From a few small patches identified in the summer of 2017 it is now in areas of Gilchrist Bay, The Lost Channel and the Big Duck Pond (see map on reverse).



Starry Stonewort poses a significant concern to anglers because of its impacts to fish habitat and fish spawning areas.

The spread of starry stonewort (SSW) may lead to a decline in fish, particularly bass that typically spawn in native chara. The dense mats formed by starry stonewort are very different from other invasives we have experienced. When starry stonewort takes hold, it causes a loss of aquatic plant diversity, shallow water habitat and fish shelter. It forms a "wall" pushing smaller fish offshore towards predators (see below).



(Lake Simcoe Region Conservation Authority, <https://www.lsrca.on.ca/Pages/Starry-Stonewort.aspx>)

SSW spreads by fragmentation and can destroy ecosystems. To slow the spread we need your help!

Please avoid the following infested areas*:

- **Gilchrist Bay** – the west shoreline and out to the islands at the mouth of the bay, the area around Little's Marina, and the Wildfire Golf Course bay.
- **The Lost Channel** – the area between the mainland and Fairy Lake Island and the bays at both ends of the channel.
- **The Big Duck Pond.**

* See map on reverse showing locations of SSW

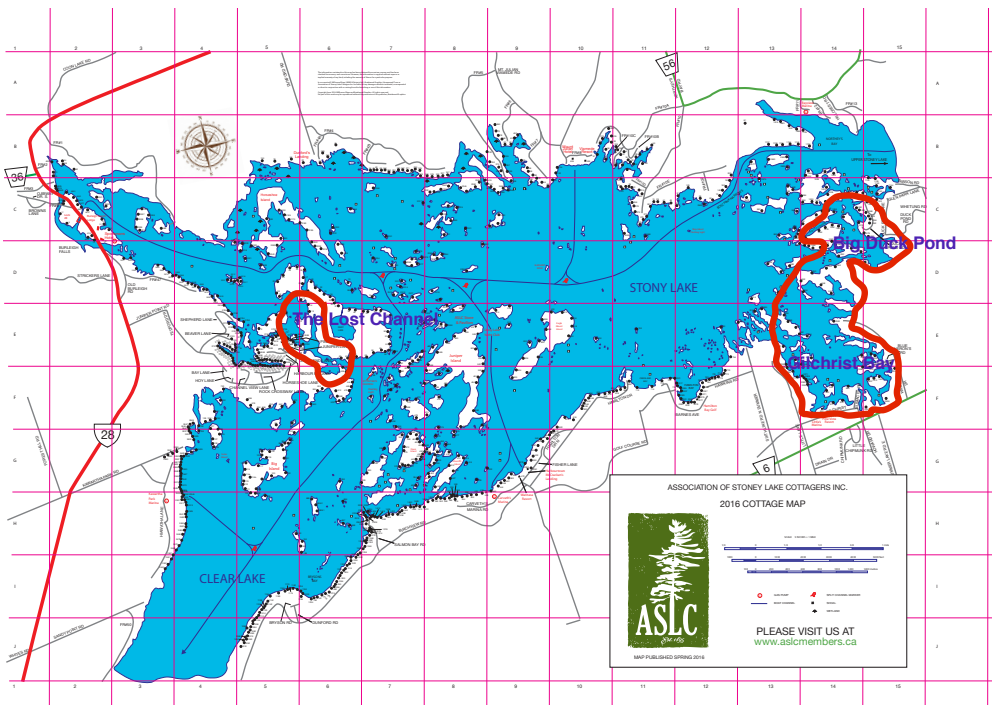
What else can YOU do?

STAY OUT OF INFESTED AREAS! Always remove SSW from your prop and don't put it back in the lake. Dispose of it well away from the water. Remember to "CLEAN, DRAIN, AND DRY" your boat, trailer and all equipment before leaving Ston(e)y Lake. This includes emptying bait buckets, live-wells and bilges. For more information, go to www.environmentcouncil.ca.

This map depicts Lower Stony only. It indicates the three identified areas of Starry stonewort infestation, all of which are in Lower Ston(e)y. Upper Stony appears to be SSW-free at the time of publication. To report this species, email starrystonewortec@gmail.com.

How do I know what it looks like?

- SSW is light green in hue.
- It often has 4-6 branches per stem, angled toward the tip of the growth.
- It is distinguished by the tiny white stars (bulbils) that give it its name.
- It forms dense, vertically thick mats the can reach over 7 ft (2m) tall in water more than 30 ft (10m) deep.
- **STEER CLEAR OF INFESTED AREAS.**



Juniper Point Cottage Owners' Association



KPCA